

CERTIFICATE OF LOCATION OF GOVERNMENT CORNER

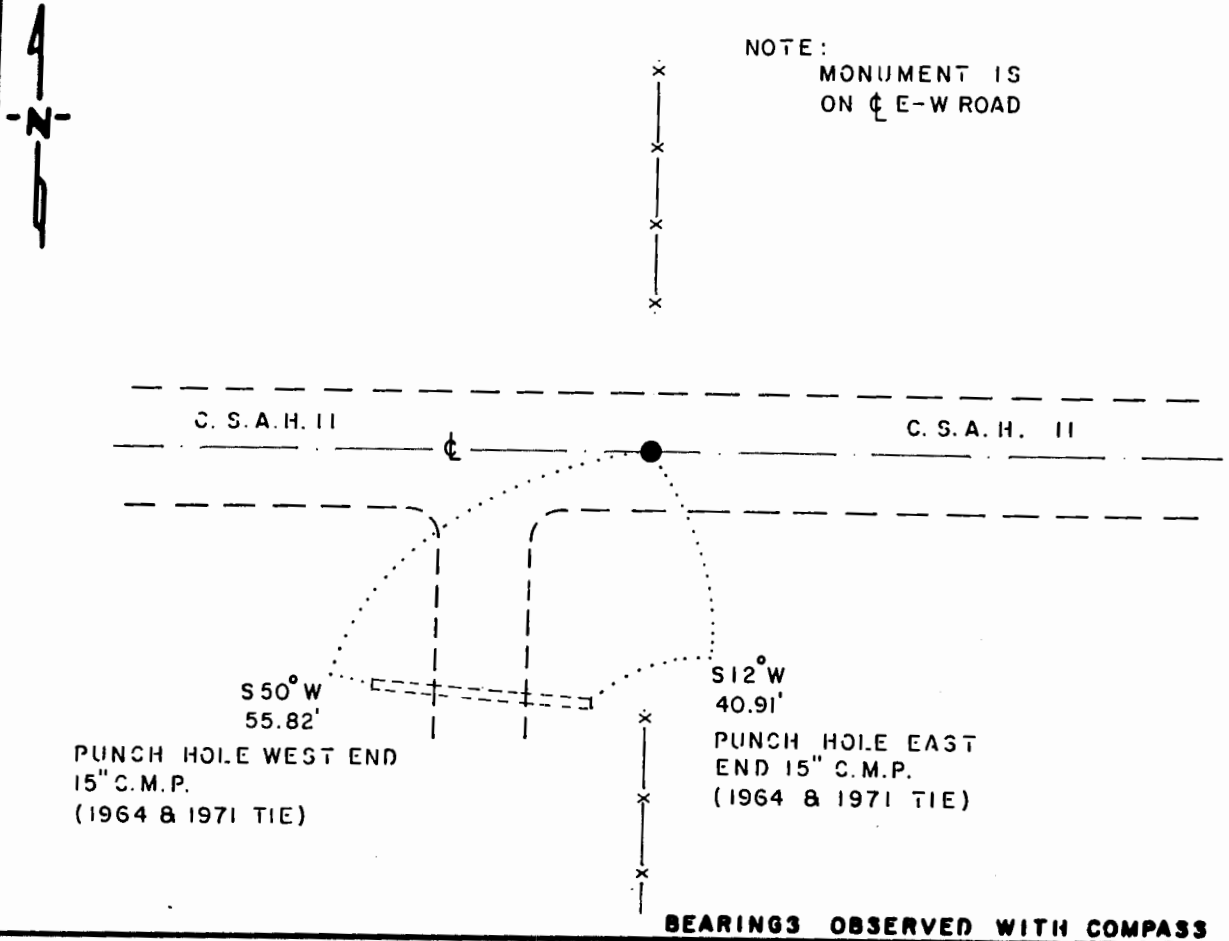
NORTH QUARTER Corner of Section 24, Township 107 N., Range 40 W., 5 th. P.M.

STATE OF MINNESOTA, County of MURRAY

At the corner location shown on the sketch:

- On 8-14-85 found a 3/4" x 7" REBAR, DOWN 0.1'
DATE
- left monument as found, lowered monument, removed monument (explain)
- On 8-14-85 placed a 1 1/4" x 1 1/4" x 20" PERFORATED STEEL TUBE WITH
DATE
ALUMINUM CAP STAMPED "D.N.R. SURVEY MARKER," DOWN 0.5'

SKETCH OF REFERENCE TIES



Statement of evidence relative to this corner location is on back of page.

J. B. M. 9-12-85
G-950

I hereby certify that this document and the data contained herein was prepared by me or under my direct supervision.

Lowell R. Pomeroy Jr. 10-9-85
SIGNATURE DATE

Registration No. 17005
 Land Surveyor, Professional Engineer
 County Surveyor, County Engineer

OFFICE OF THE COUNTY RECORDER
County of _____

I hereby certify that this document was filed in the Co. Recorders office at _____ M. on the _____ day of _____ A.D., 19 _____

County Recorder _____
By _____, Deputy
DOCUMENT NO. _____

North Quarter Corner Section 24, Township 107 North, Range 40 West

This corner was originally established by the U. S. General Land Office survey in 1861. The government notes show corner marked with a wood post set in mound of earth with pits and trench dug around the mound.

In March 1985, the DNR Bureau of Engineering contacted the Murray County Offices of the Recorder and Highway Engineer for corner information.

The following information was obtained from the Recorder's Office:
Surveyor's Record Book A, on Page 77, contains a survey made by J. W. Woolstencraft in October 1898. Survey shows a 4 inch by 6 inch by 20 inch stone at corner but does not indicate if found or set. This information is also contained in an old tie book in the Highway Engineer's Office.

The following information was obtained from the DNR Bureau of Engineering's Office:

A 1964 survey shows that an iron pin was found at corner per Highway Engineer's information. The following ties are shown to corner:
top center east end, CMP, south, 40.85 feet
top center west end, CMP, southwest, 56.48 feet
2660.38 feet from the northeast corner of Section 24
2633.75 feet from the northwest corner of Section 24

A 1971 survey shows that a railroad spike was set for corner in line with section corners. The following ties are shown to corner:
top center west end, CMC, southwest, 56.36 feet
top center east end, CMC, south, 40.97 feet

On July 2, 1985, the DNR Bureau of Engineering hired a backhoe operated by Larry Ruppert of Currie to dig for evidence of this corner. An 8 foot north-south by 10 foot east-west by 3.8 foot deep hole was dug, the center being the intersection of the center line of an east-west road and fences north and south. A 3/4 inch by 7 inch rebar was found down 0.1 of a foot. An old bituminous road was found down 2.0 feet and natural ground was encountered down 2.8 feet. Searched for and found record ties as shown on sketch of ties. The rebar was found to be:

2660.84 feet from the northeast corner of Section 24
2633.80 feet from the northwest corner of Section 24
0.52 of a foot north of a line between section corners

Accept the rebar as the location of the corner and replaced it with a DNR Survey Marker.

Traverse information is available from the DNR Bureau of Engineering.